

FLOAT & TAPE LEVEL GAUGE



... the level & gas people

ISO-9001 : 2008 CERTIFIED COMPANY

MODEL : FTLG-1100



Tank Level Gauge

FTLG Series

Purpose of Sensor

- Since it is very easy to be installed and separated, even a novice can manage well.
- Since it can be installed readily, it can be applied to all the existing equipments or tanks of any shape.
- It can improve the safety against corrosion and to toxicity by applying to an sealed tank.
- It can establish a remote control or central inspection system by combining various transmission devices.
- Since large indicating instrument is applied, it is easy to read even from a long distance.

FTLG Series

Operating Principle

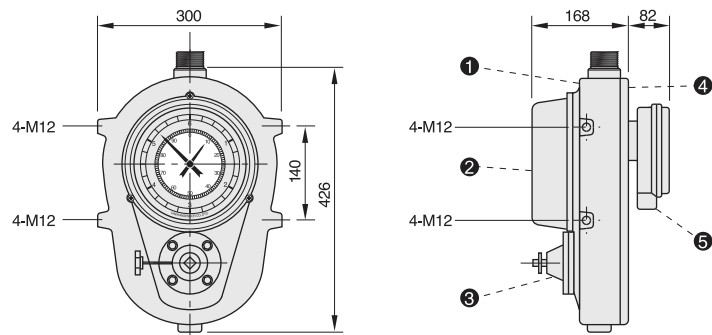
This Product can easily be installed, maintained, and repaired. Also it can be used for multiple purpose since it can be used in the petroleum oil, Water and other types of liquids. It can widely be used in the measuring of surface level of Petroleum Oil, Products. In addition, it can prevent environmental pollution in the sewage and waste water treatment plants and allow a safe operation on chemical industry site that handle acid and alkali, food alcohol, cooking oil and paint.

Specification

Pulley Enclosure	: Aluminum
Pulley	: SS 304, SS316
Float	: SS304, SS316, PP, teflon insulated
Float Wire	: SS316, Teflon Insulated
Guide Wire	: GI (25mm)
Pipe	: CS, SS304, SS316, teflon insulated
Process Connection	: SS, CS
Spring Assembly	: SS304, SS316, teflon insulated
Anchor Bar	: CS, SS304, SS316, teflon insulated
Flange for Spring Assembly	: Aluminum
Indicating Head Housing	: +-1mm
Accuracy (Indicator)	: +-0.5%
Accuracy (Transmitter)	: MS
Pipe Support	: 150°C
Indicating Gauge Support	: 1kg
Temperature	: 2.5 to 30 Meter
Pressure	
Maximum Range	

Gauge Material

1. Body	ADC 12
2. Front Cover	ADC 12
3. Gear Box	ADC 12
4 Beck Cover	ADC 12
5 Terminal Box	ADC 12



Pic. 1

FTLG Series

MODEL DECODIFICATION

FTLG	I	II	III	IV
Measuring Range (0-20m).....				
Process Connection.....		Please Specify		
Service.....			Please Specify	
only Indicator (I) or				
Indicator with Transmitter (IT).....				

FTLG Accessories

Pulley Enclosure & Pulley

Pulley Enclosure MOC- Alluminum Alloy. other on request

Pulley MOC -SS



Pic. 2

Bottom Anchor

MOC-SS, PP, other on request



Pic. 3

Spring Guide Assembly

MOC-CS,SS, other on request



Pic. 4

Float

MOC-SS304,SS316,PP,Teflon insulated,other on request



Pic. 5

Pipe & Pipe Support

MOC-GI,SS, other on request

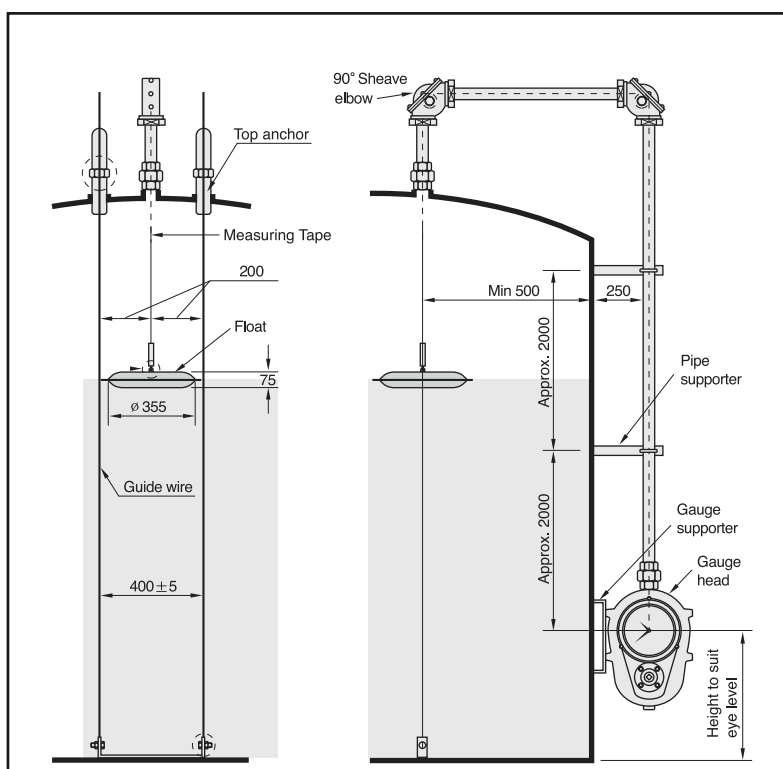


Pic. 6

Indicator Mounting Assembly

MS, CS

■ Installation Diagram



Pic. 7

V. AUTOMAT & INSTRUMENTS (P) LTD.

Regd. Off. F-61, Okhla Industrial Area, Phase-I, New Dlehi-110020 (INDIA)

Ph.: +90-11-47627200 (40 Lines) Fax: +91-11-26819440

Email: vautomat@airtelmail.in, sales@vautomat.com website: www.vatuomat.com

www.vautomatwireless.com